

# Overview of ETSI-BC

Keeping it Rural Conference, May 2024

# Who we are

- We're one of the 3 Regional Economic Trusts in BC
- \$60 million received from Province of BC since 2006
- Mandate: help the region's economy grow & diversify

**Strong economy = Stronger communities**

# Who we serve

Population of 758K, spanning:

- 33 First Nations
- 9 Regional Districts
- 53 Municipalities

## ETSI-BC Service Area



# Regional Advisory Committee Areas

- 75% of total population
- All of our urban residents
- 50% of our rural residents
- 27 First Nations



- 25% of total population
- 50% of our rural residents
- 6 First Nations

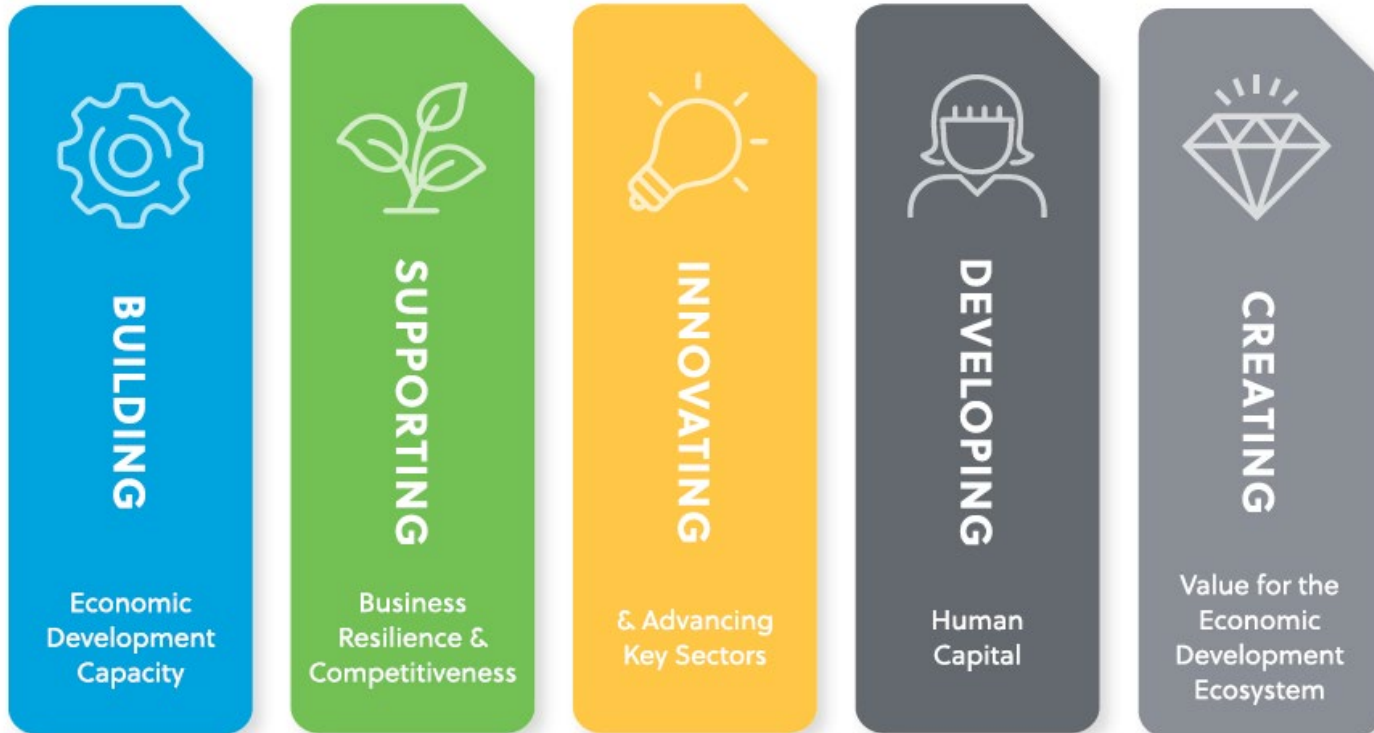
# How we support Economic Development

We offer funding, resources and knowledge to:

- Foster collaboration, provide seed funding for projects
- Focus on smaller communities, First Nations
- Provide \$20 – 50K per project (typically), with Funding Intakes in spring and fall.

**We do NOT** provide funding or loans directly to business.

# Our Strategic Pillars



Supporting your community with grant funding, training, and resources

# Community Partners

- Local Governments
- Economic Development Officers
- First Nations
- Community Futures
- Chambers of Commerce
- Indigenous Organizations
- Industry Associations
- Accelerators
- Post Secondary Institutions



# Pillar 1: Building Economic Development Capacity



Supporting First Nations, smaller, rural and disaster-affected communities in building economic development capacity, partnerships and collaborations, to:

- Enhance the capacity of First Nations and Southern Interior communities to fulfill their economic development aspirations.
- Encourage meaningful collaboration between First Nations and local governments, and regional collaboration among communities.



## Pillar 2: Business Resilience & Competitiveness



Offering programs and resources that address the region's incremental business support needs around business recovery, resiliency and competitiveness.

- Working in partnership with non-profit business support organizations, accelerators, industry groups, First Nations and local governments.
- Includes RBCR and FIR Programs, delivered with financial support from the **Province of BC**:
  - Rural Business & Community Recovery Program (FY2021-23), with 36 Advisors)
  - Forest Impact Recovery (FIR) Program (FY2023-25), with 21 Advisors

# Pillar 3: Innovating & Advancing Key Sectors



INNOVATING

& Advancing  
Key Sectors

Supporting initiatives that foster innovation, industry/cluster growth, advance our key mandated sectors, and encourage the transition to Net Zero. Includes:

- Funding for sector-based initiatives to help stimulate business growth and innovation.
- Support for industry to become more environmentally sustainable and transition to a Net Zero economy through funding that assists industry groups.

# Rural Transportation Enhancement

With funding from the **Province of BC**, ETSI-BC launched the

- [2023 Regional Ground Transportation Study](#) – which identified issues and opportunities related to rural inter-city passenger transportation in the Southern Interior.
- Regional Transportation Enhancement (RTE) Funding Program, with \$650,000 available. Projects must be complete by October 2024.

\$662,986 has been approved for 23 projects, under 3 streams:

- RTE 1: Planning & Partnership Development
- RTE 2: Technology & Service Communication
- RTE 3: Seasonal Service Delivery/Expansion



# Pillar 4: Developing Human Capital



Supporting entrepreneurship programming, work-integrated learning, and research partnerships with the region's public post-secondary institutions.

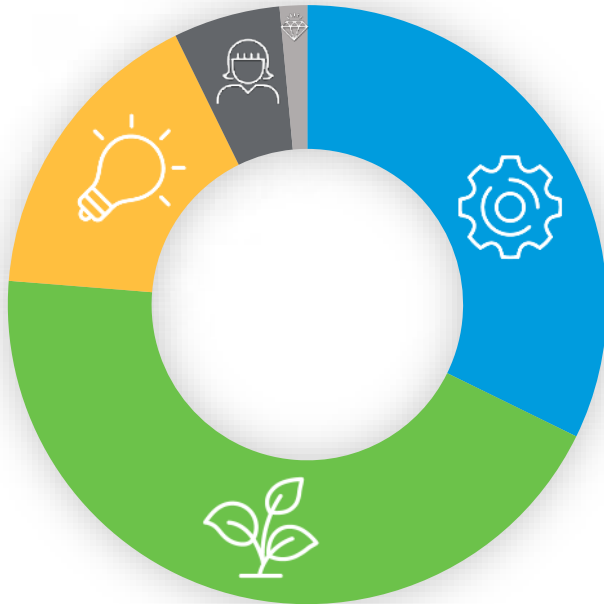
- To encourages new venture creation, assist students and grads to find meaningful jobs in the region, help create local solutions to industry challenges.
- Entrepreneurship & work-integrated learning funding is offered on an RFP basis with our 6 PSIs.
- Our funding partnership with Mitacs covers a portion of the employer cost of a Mitacs project in partnership with a local PSI.



Nurturing continuous learning and foster collaborative knowledge sharing among economic development practitioners in our region, by:

- Supporting collaborative networks of practitioners throughout the Southern Interior.
- Convening post-secondary institutions and accelerators to encourage knowledge sharing and collaboration.
- Strengthening economic development capacity through training, resources, data and dialogue.

# 2021-24 Funding Breakdown by Pillar



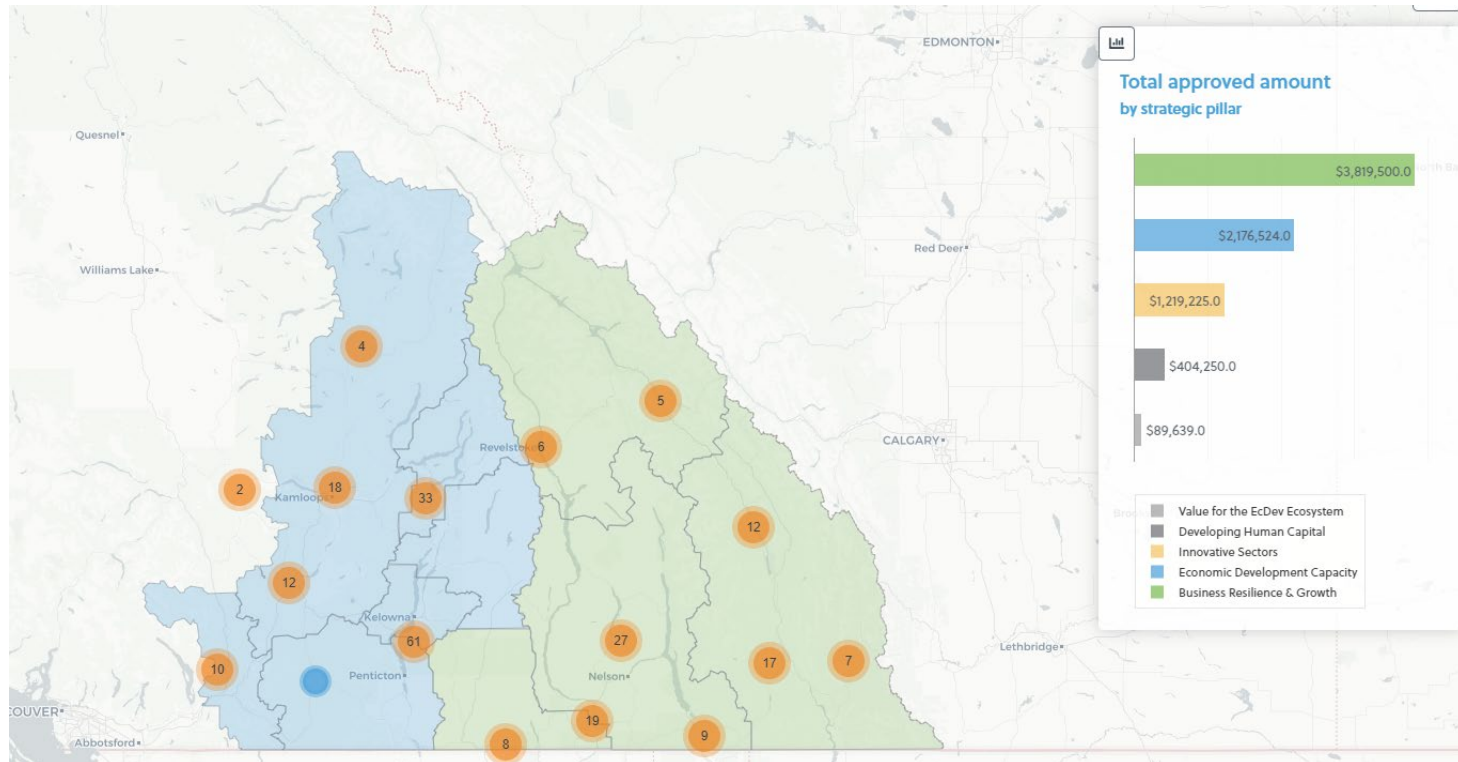
## 2021-24 Strategic Plan Funding:

- \$7.8 million in grant funding for 275 projects since re-launching in April 2021

## Since Inception:

- Total funding of \$71 million supporting 661 projects worth over \$260 million
- Helped create or maintain 22K jobs in our region (18K+ jobs since 2021)

# fundedprojects.etsi-bc.ca



# New Resource for FY2025

## Local Area Economic Dependencies Dashboard (LAED)

- Launching in June 2024
- Visualizations of important economic development data, including detailed definitions
- Covers 32 'local areas' and all Regional Districts
- Will provide a 'how to' manual!





# Local Area Economic Dependencies Dashboard



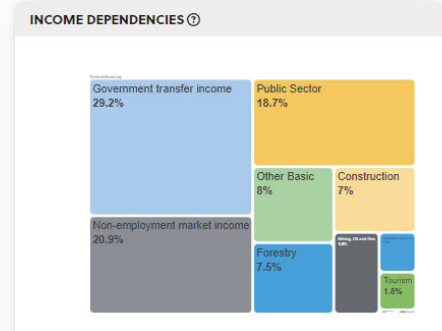
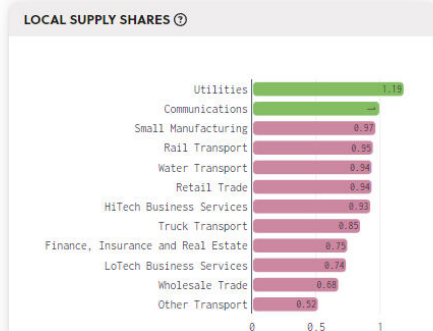
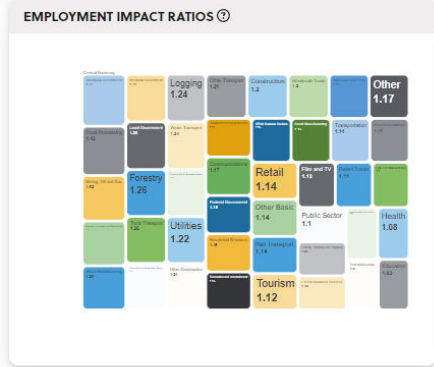
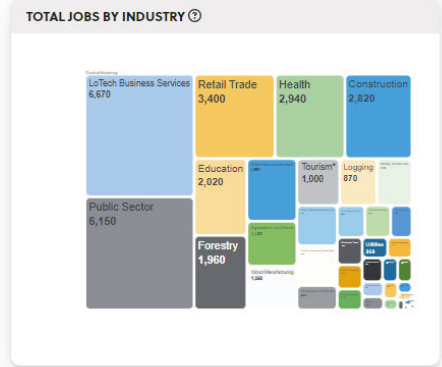
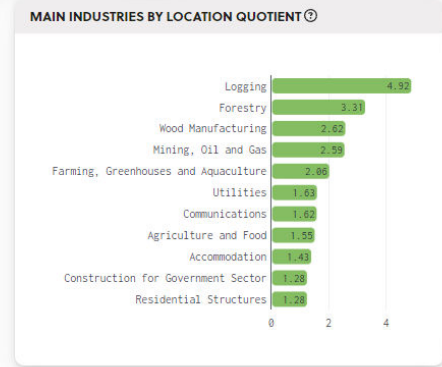
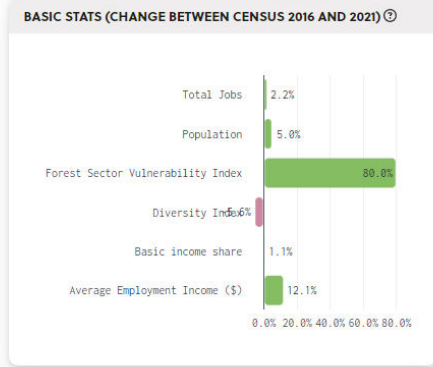
Economic & demographic data for the Southern Interior, Regional Districts or 32 'local areas'.

- Entire Region
- Regional Districts
- Local Areas
- Industries
- Raw Data
- About

Show me **Central Kootenay** Regional District economic profile

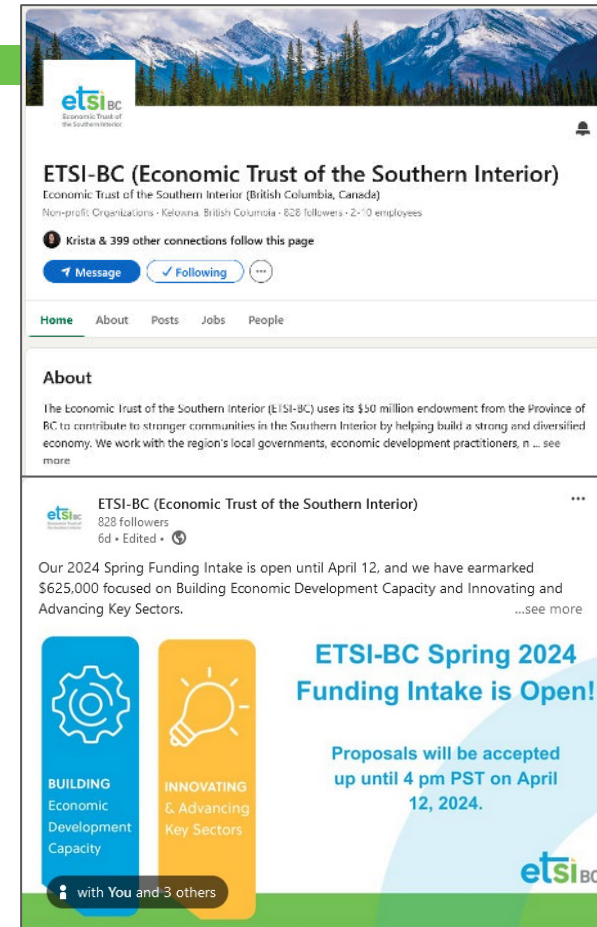


<b>Population</b> <b>62,509</b>	<b>Total Jobs</b> <b>27,215</b>	<b>Average Employment Income (\$)</b> <b>\$49,900</b>	<b>Basic Income Share</b> <b>88%</b>	<b>Industry Diversity Index</b> <b>67</b>	<b>Forest Sector Vulnerability Index</b> <b>18</b>
------------------------------------	------------------------------------	--	---	--	---



# Engage with ETSI-BC

- Sign up for our eNews  
[www.etsi-bc.ca](http://www.etsi-bc.ca)
- Attend a funding Info Session  
help your community apply for funding
- Use our regional data tools  
<https://our-region.etsi-bc.ca/> & new LAED tool
- Connect on  
LinkedIn @etsi-bc  
Twitter @etsi\_bc
- Volunteer for a RAC (2026)



# Thank you!



Renata King  
[Renata@etsi-bc.ca](mailto:Renata@etsi-bc.ca)  
Thompson-Okanagan

Mary Beadman  
[mary@etsi-bc.ca](mailto:mary@etsi-bc.ca)

Paul Wiest  
[paul@etsi-bc.ca](mailto:paul@etsi-bc.ca)  
Columbia-Kootenay

Laurel Douglas  
[laurel@etsi-bc.ca](mailto:laurel@etsi-bc.ca)

Working with you to build strong  
economies, stronger communities

