



Community Forests are Changing the Way BC's Forests are Managed

Jennifer Gunter, Executive Director BCCFA



British Columbia
Community
Forest
Association

local people, local forests, local decisions



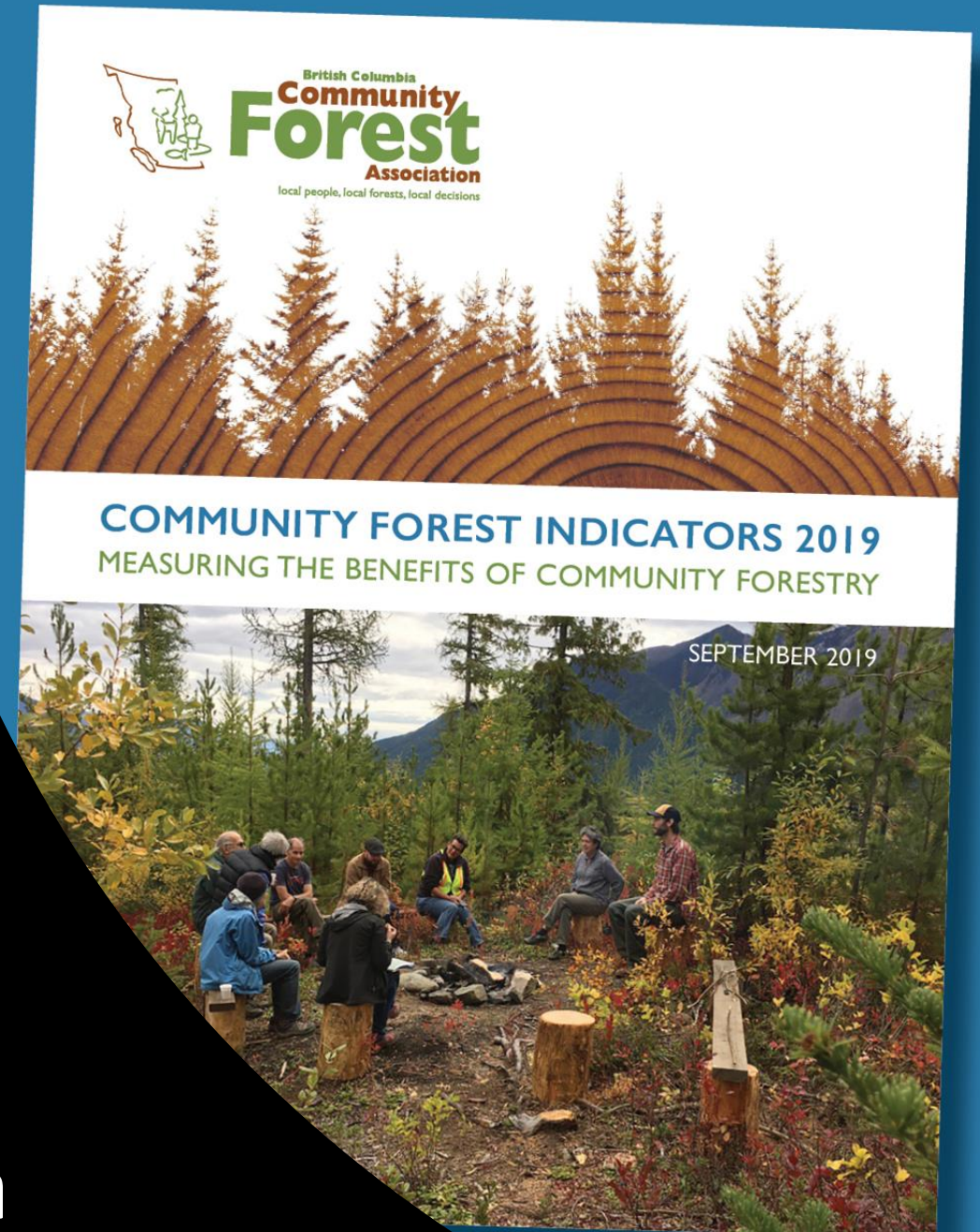
Community forests are a powerful tool

- Energizing rural development;
- Building partnerships with Indigenous communities;
- Protecting communities from catastrophic wildfire and adapting to climate change.

Community Forest Indicators Survey

- The 2019 report:
 - CFs created 80% more jobs/m³ that industry average in their forestry operations.
 - Generated on average \$1.96 million/year in economic activity.
 - Contributed an average of \$530,000 in community donations.

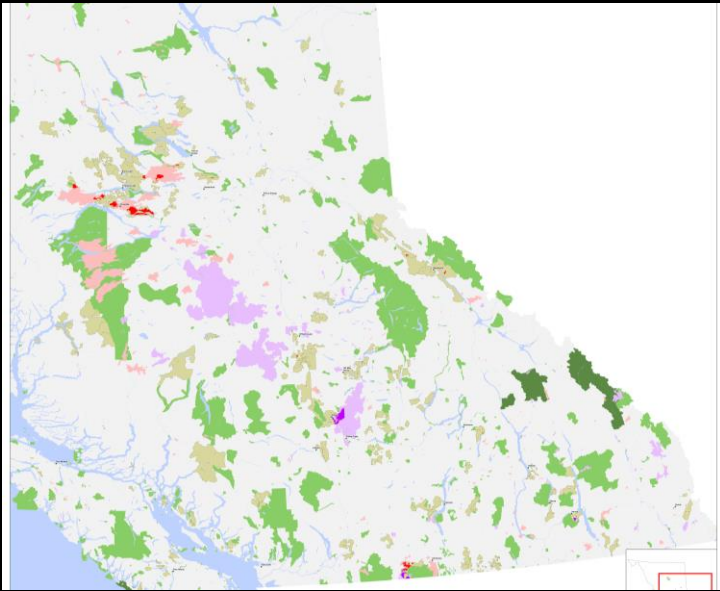
www.bccfa.ca





Indicator #13 Proactive Wildfire Management

- 77% have collaborated with their local government on wildfire planning and mitigation
- \$12 million investment in wildfire mitigation
- Average \$40,000



BC Wildfires

- 2017: 1.2 million HA
- 2018: Over 1.3 million HA







SIFCo HEALTHY FORESTS — HEALTHY COMMUNITIES

HOME ABOUT INTEGRAL FORESTRY THE TEAM FOREST PRODUCTS VIDEO GALLERY BLOG CONTACT RESOURCES MEMBER AREA

WILDLAND URBAN INTERFACING

The point at which crown land meets our towns and villages is known as the Wildland Urban Interface.

The ecologically sensitive management of these areas has become a primary focus of SIFCo. For a number of reasons we are witnessing a prolific build up of fuels on our forest floors. Couple this with changes in our climate and the threat of forest fire becomes very real and a great concern.

Our vision is to be pro-active in creating protective boundaries at the landscape level, known as landscape level strategic fuel breaks, so as to prevent unnecessary damage to the places where we reside if a wildfire were to occur.

To learn more please watch the video below.

SIFCo - BUILDING A LANDSCAPE LEVEL...



Slocan Integral Forestry Cooperative
www.sifco.ca





*Prioritizing Community-Based
Tenures for Wildfire Mitigation &
Rural Development*

A concept paper

Recommendations:

Introduce legislation to enable a reapportionment of volume to community-based tenures.

Actively support the development of more community forests that are partnerships between Indigenous and non-Indigenous communities.

Where independent licences are preferred, support collaboration between community forest agreement holders and First Nations tenure holders.





Community Forests

*“Involving more Indigenous and rural
communities directly in forest management”*