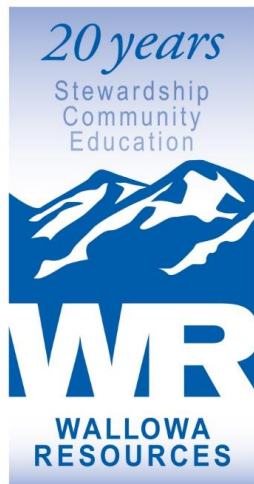


Stewarding the Land

Creating Resilient Rural Communities

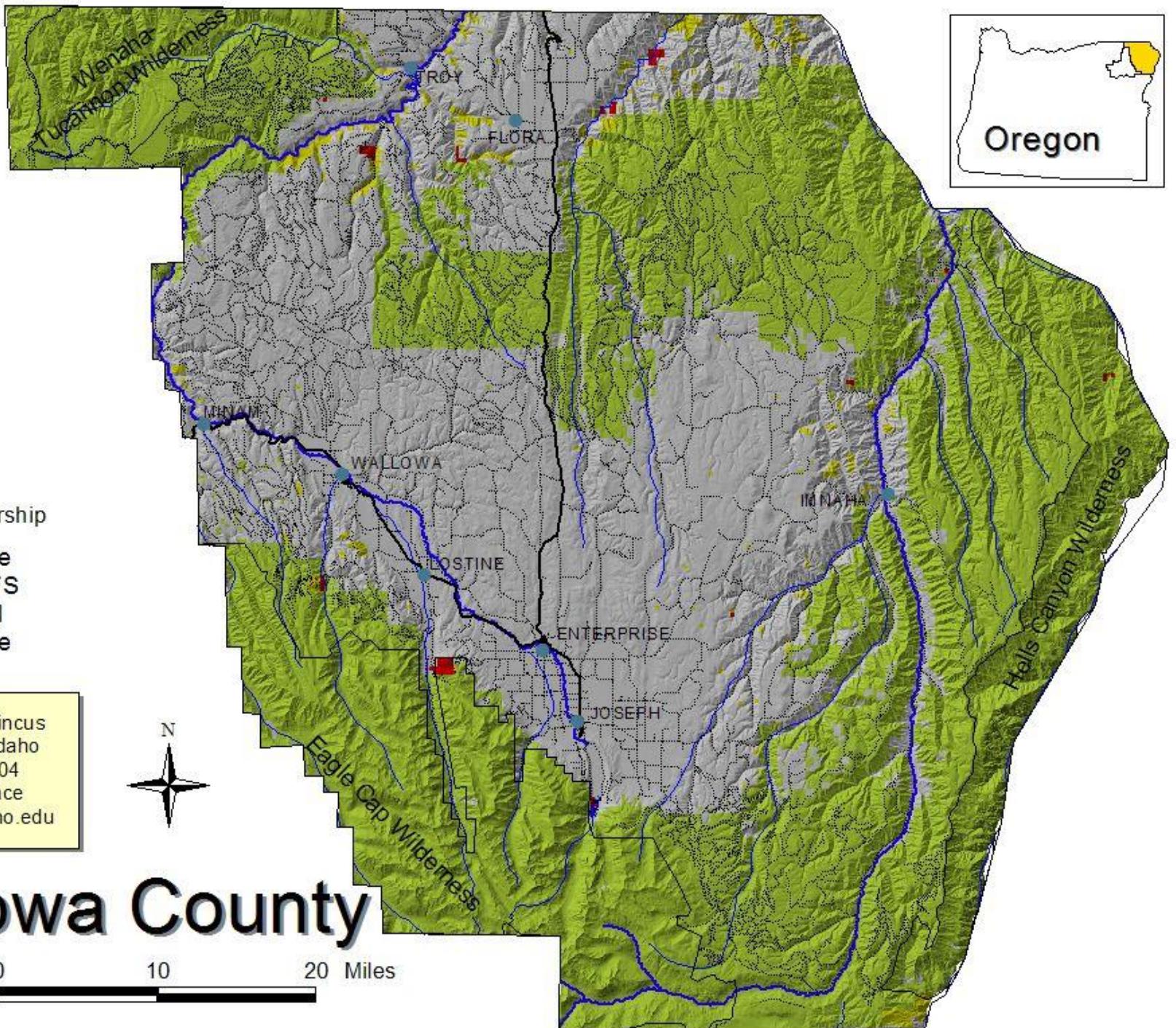


Nils D Christoffersen
Executive Director

Keeping It Rural 2017

SIBAC Rural Development Conference

Kelowna, BC. June 20, 2017



Land Ownership

- State
- USFS
- BLM
- State

Max Nielsen-Pincus
University of Idaho
June 23, 2004
Sense of Place
niel9897@uidaho.edu

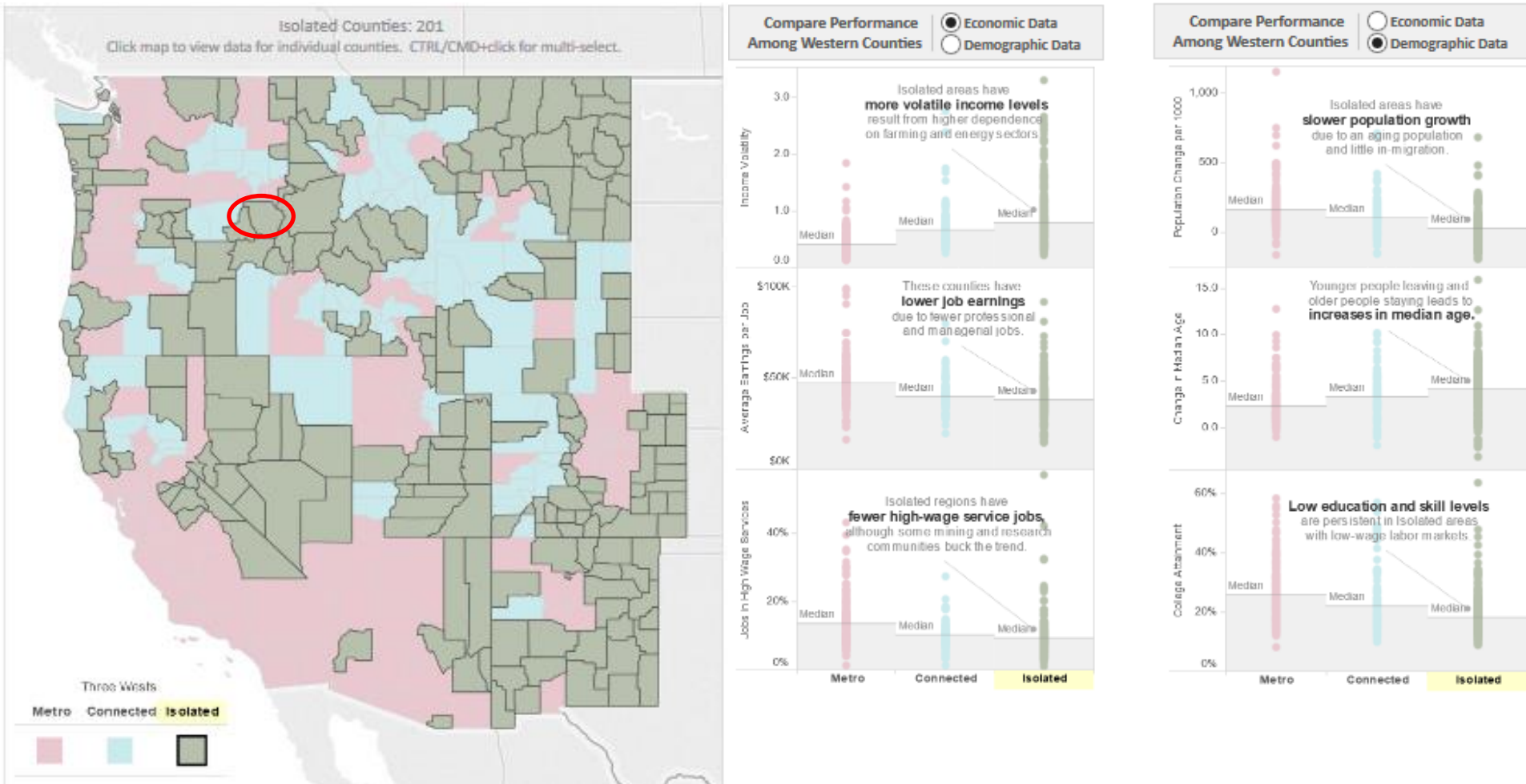


Wallowa County



Three Wests: The impact of access to markets on the economic performance of the West

Headwaters Economic. 2015



Isolated counties are older, growing slower, with a higher dependence on retirement income, agriculture, and more jobs in health care, government and resource industries.









Stewardship Economies

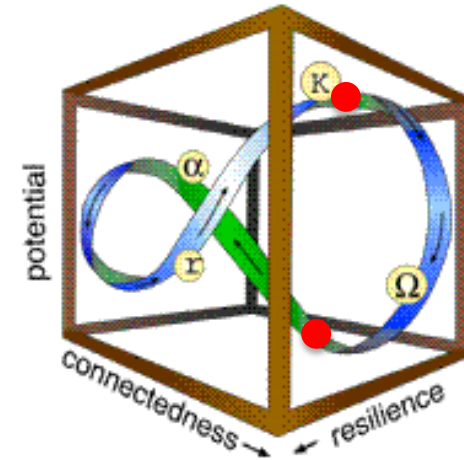
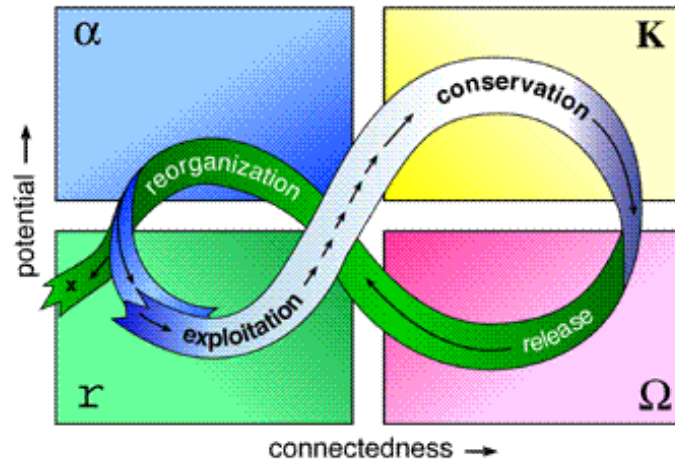


Four Pillars

- Land Stewardship
- Value added businesses
- Education, training, R&D
- Enabling legislative and policy framework



The Wallowa Story



Images from (Holling 2004)

The Wallowa Story is about reorganization: the attempts to revive a collapsed system, create new relationships between forest stakeholders and develop innovative technologies to support a forest stewardship economy



Wallowa Resources

Stewardship of working lands: the ideas, the practice and the jobs!

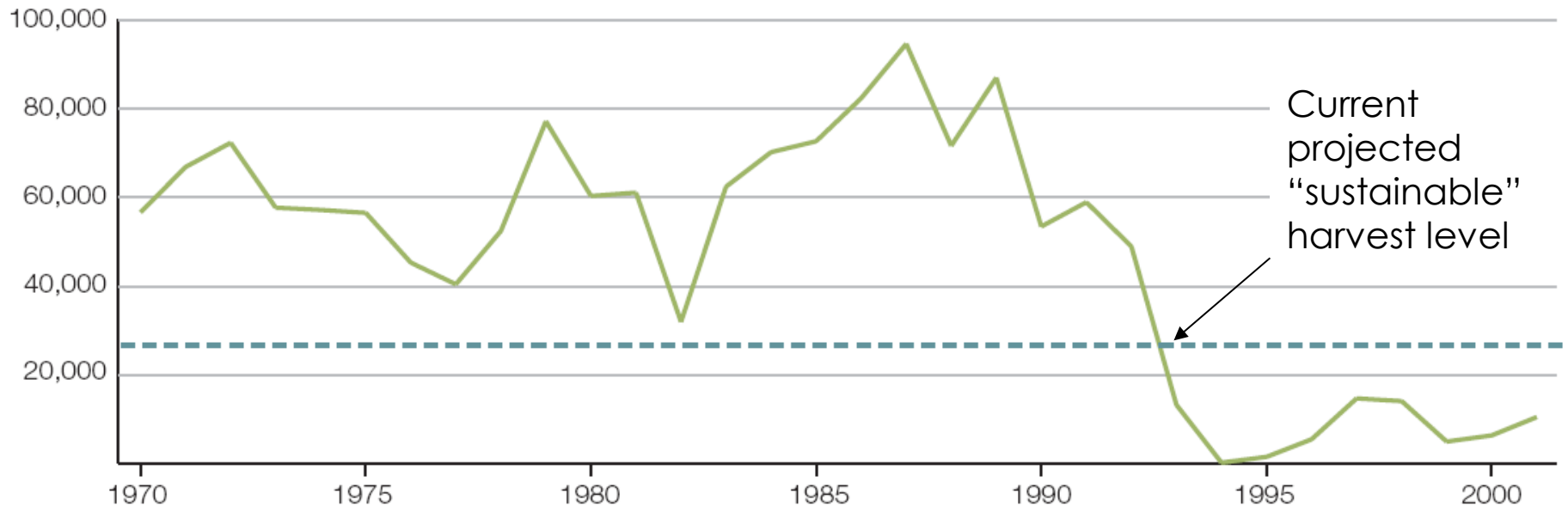
Wallowa County Nez Perce Tribe Salmon Habitat Recovery Plan

- Proactive local action - 1993
- Habitat conservation for endangered species in County Land Use Plan
- Federal coordination
 - MOU with USFS



Timber dominance in Wallowa County

- 1900s-1998, 80-90% of manufacturing jobs
- 1980s, >85 million board feet per year from public lands
- 2010's <5 million board feet per year from public lands



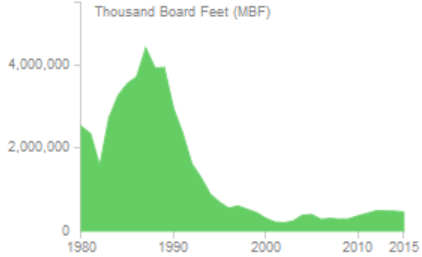
Decline in timber harvest from USFS lands in Wallowa county.
Volumes in 1000 bd ft

Source: Christoffersen, 2005

The Collapse

Oregon

Cut Volume

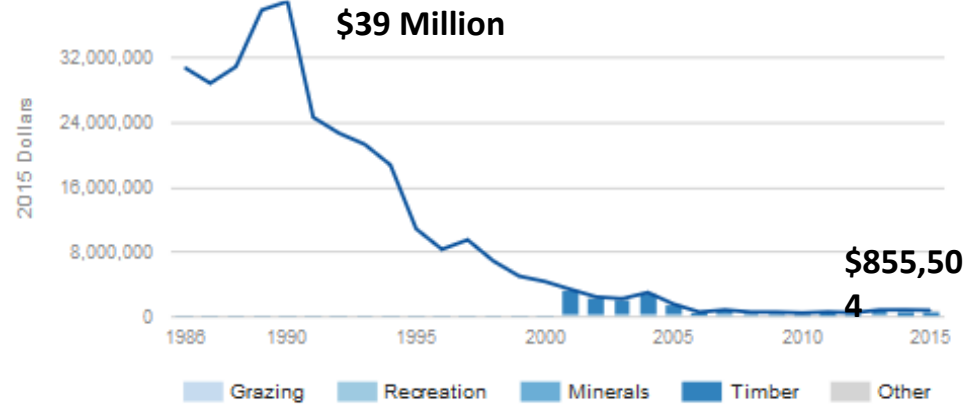


Peak: 4.4 Billion Board Feet
2015: 453 Million Board Feet

90% decline in Cut Volume

Wallowa-Whitman National Forest

Inflation Adjusted Gross Receipts by Type, 1986 - 2015

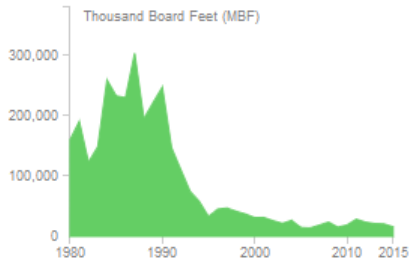


98% Decline in Gross Receipts

National Forests Timber Cut, FY 1980-2015

Wallowa-Whitman National Forest

Cut Volume



Peak: 304 Million Board Feet
2015: 16 Million Board Feet

95% decline in Cut Volume



Wallowa Resources

Stewardship of working lands: the ideas, the practice and the jobs!

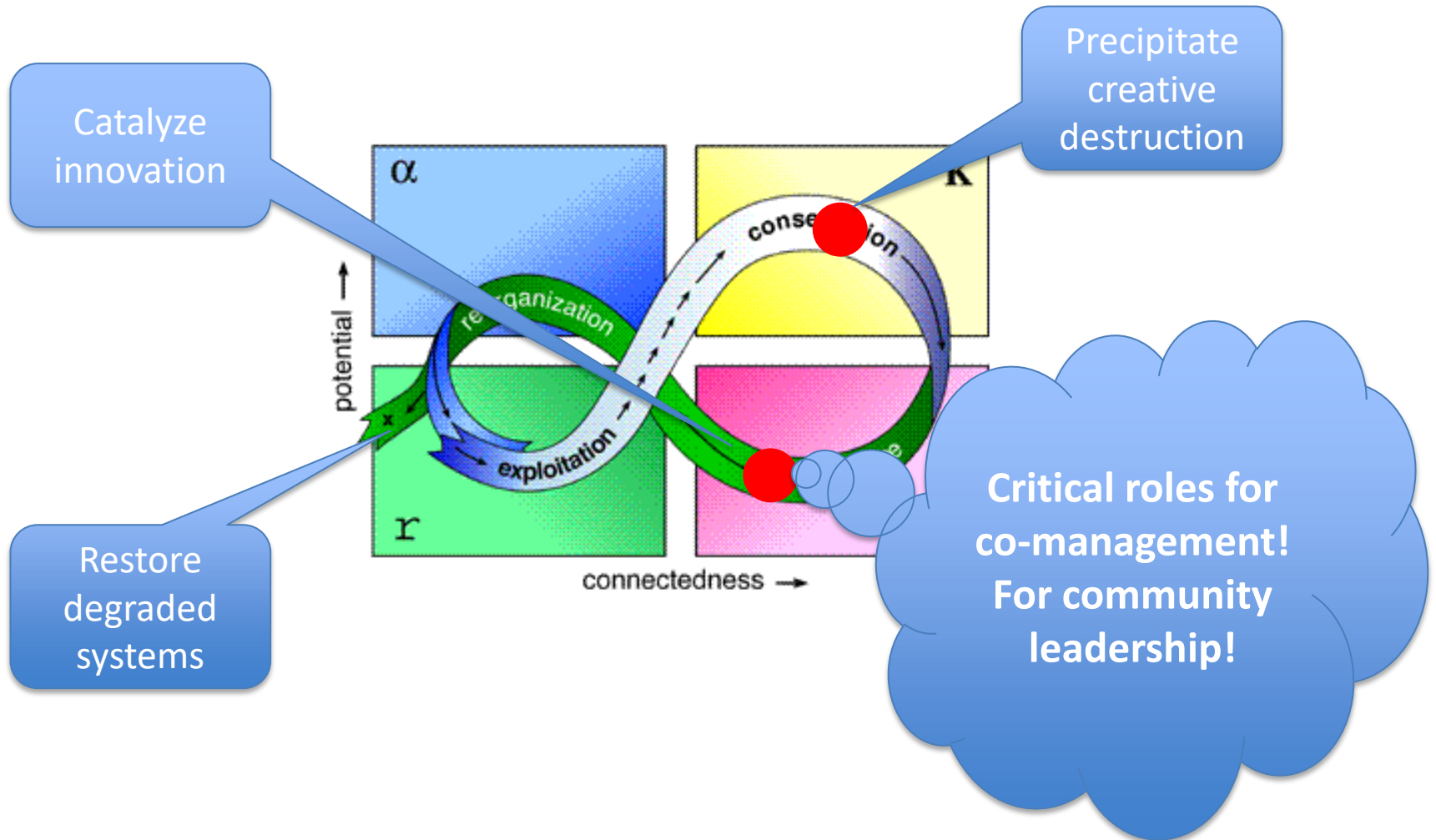
Creation of Wallowa Resources

- Established 1996
- Community non-profit
- Respond to profound change
- Natural resource innovation
- Access new forms of capital
- Create new models



Building Resilience

How to Influence a System



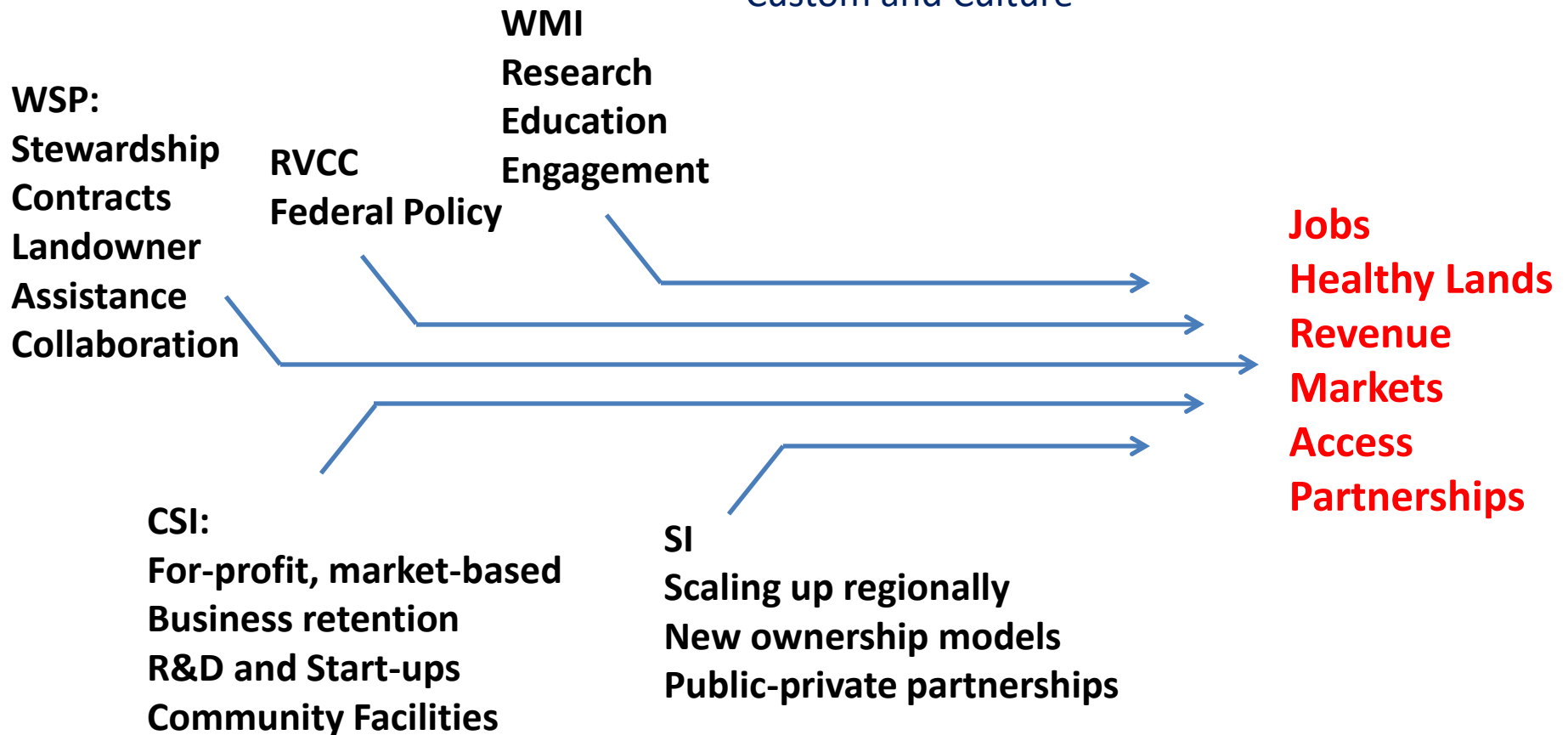


Wallowa Resources

Stewardship of working lands: the ideas, the practice and the jobs!

Extensive Innovation for Rural Revitalization:

consistent with County/Regional Values,
Custom and Culture





Wallowa Resources

Stewardship of working lands: the ideas, practice and jobs!

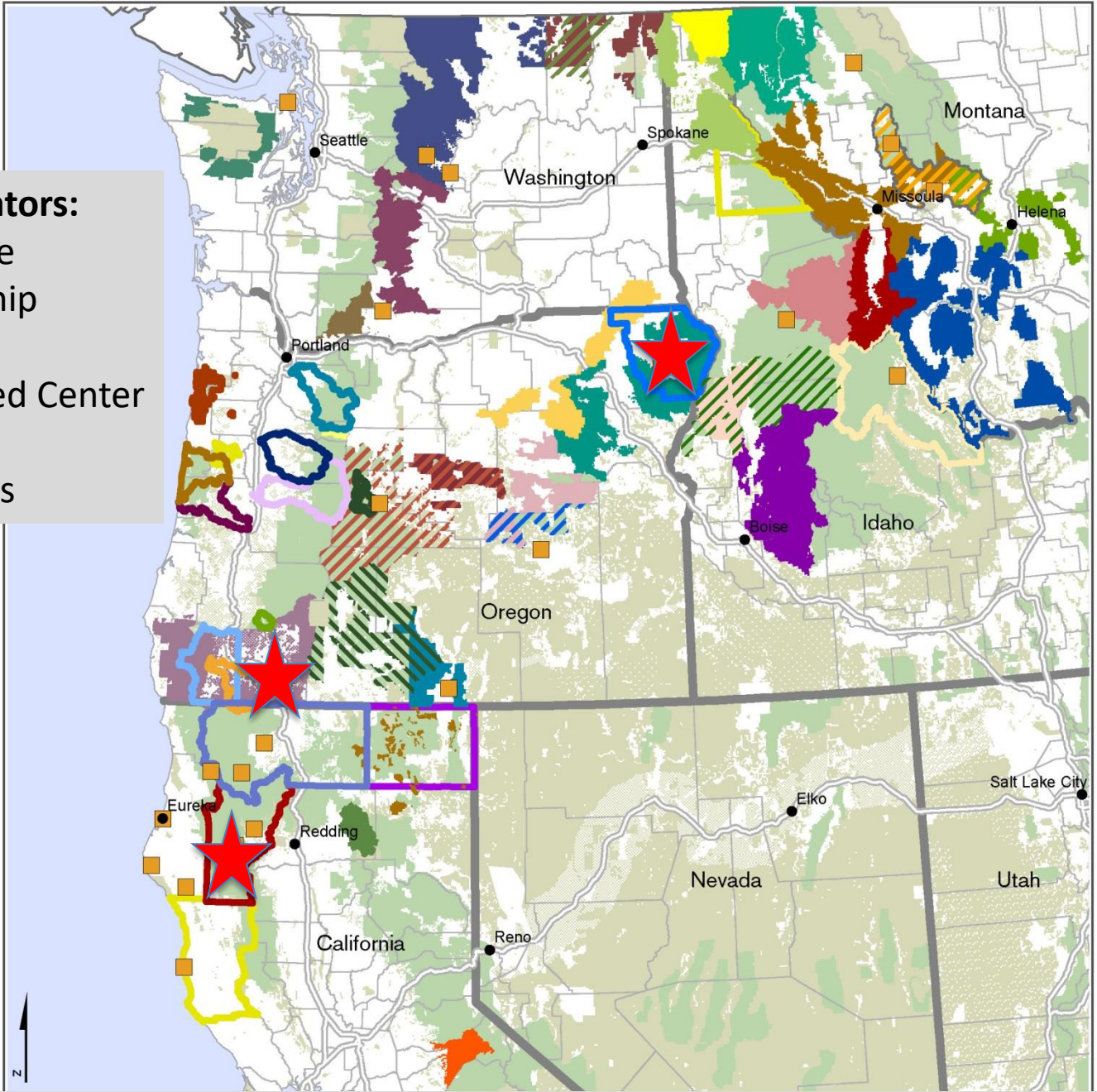
Collaborative Forest Management

*74,000 Acres of WWNF - >\$6 million local benefit
Fisheries & Wildlife Habitat / Forest and Range Conditions*



Early Innovators:

- Applegate Partnership
- Hayfork Watershed Center
- Wallowa Resources



Expansion of Community Based Organization and Forest Collaboratives Across PNW



Wallowa Resources

Stewardship of working lands: the ideas, practice and jobs!

Collaborative Weed Management *Over 1 million acres*





Wallowa Resources

Stewardship of working lands: the idea, the practice and the jobs!

Business Development and Support

- Community Solutions Inc
- Community Smallwood LLC
- Renewable Energy Solutions LLC
- Integrated Biomass Resources LLC
- Stewardship Contractors
- FSC Certification (N.A Rep)
- “Weed Free” Hay/Straw Certification
- “Pest Free” Firewood Certification





Wallowa Resources

Stewardship of working lands: the idea, the practice and the jobs!

Community Infrastructure

- Salt Creek Summit Recreation Center
- County Fair Grounds Stage
- Enterprise School Biomass Boiler
- Imnaha and Chesnim Campgrounds
- WR Stewardship Center
- Irrigation Pipeline
- Trails, Bridges, Culverts, Springs, etc



Integrated Biomass Energy Campus

Local job creation, forest health, renewable energy



What we do:

- create meaningful rural jobs
- make innovative wood products
- restore public lands
- produce clean energy





Wallowa Resources

Stewardship of working lands: the idea, the practice and the jobs!

Research and Education

- Youth Stewardship Education Program
- Oregon Youth Conservation Corps
- Pacific University
- Whitman College
- Eastern Oregon University
- Colorado State University
- OSU Graduate Seminar
- Nature and Heritage Tours
- Graduate and Post-Graduate Research



Stewardship of working lands: the idea, the practice and the jobs!

Benefits

- Local institutional capacity and leadership
- New businesses, jobs and economic activity
- Health, productivity and profitability of working lands
- Large landscape conservation – meeting today's needs and opportunities and benefits for the future



